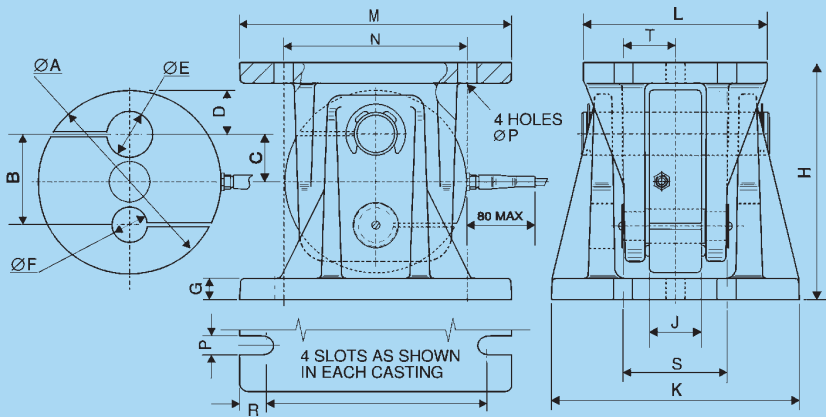


technical specification sheet

Series T95 LA

	Accuracy Class		Units
	Commercial	C3#	
Rated Output	2	2	mV/V $\pm 0.25\%$
Combined Error	$< \pm 0.05$	In accordance with OIML R60	%*
Non-repeatability	$< \pm 0.02$		%*
Temperature Effect on Zero Balance	$< \pm 0.0025$		%*/ $^{\circ}\text{C}$
Temperature Effect on Span	$< \pm 0.0035$		%*/ $^{\circ}\text{C}$
Compensated Temperature Range	-10 to +40		$^{\circ}\text{C}$
Operating Temperature Range	-40 to +80		$^{\circ}\text{C}$
Safe Overload	150	150	%*
Ultimate Overload	300	300	%*
Zero Balance	$< \pm 1$	$< \pm 1$	%*
Input Resistance	380	380	$\Omega \pm 30$
Output Resistance	350	350	$\Omega \pm 1.5$
Insulation Resistance	> 5000	> 5000	MΩ @ 100V
Recommended Supply Voltage	10	10	V
Maximum Supply Voltage	15	15	V

*With respect to rated output



Range (kg)	A	B	C	D	E	F	G	H	J	K	L	M	N	P	Q	R	S	T
2000 - 10000	134	66	35	32	32.5	26	15	174	38	182	135	200	135	16	170	15	70	35
20000	187	87	40.5	53	48	36	22	245	57	252	186	260	185	20	218	21	100	50

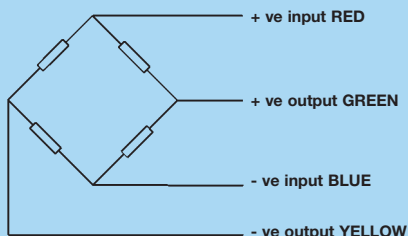
All dimensions in mm.

Note: Cell performance is characterised when tested in the specified loading assembly.

Electrical Connections

Via 4 core, 4m (15m for 20000kg model), 6mm dia., screened polyurethane cable.

Screen not connected electrically to load cell.



Shipping Weights: (kg)

Cell = 4 (10000), Cell = 11.5 (20000)
LA 95 = 14 (10000), LA95 = 38.5 (20000)

Construction

Load Cell manufactured from 17-4PH stainless steel heat treated to H900 condition - 1379N/mm² UTS.

Options

#For C3 applications there is an alloy steel version available.
M16 conduit adaptor for connecting additional cable protection.
Load cell only (model T95).

Our policy is one of continuous product enhancement. We therefore reserve the right to incorporate technical modifications without prior notification.

Distributed by

Thames Side - Maywood

Thames Side-Maywood Limited

17 Stadium Way, Reading

Berkshire RG30 6BX UK

Tel: +44(0)118 9458200

Fax: +44(0)118 9458225

E-mail: sales@thames-side.co.uk

Web: www.thames-side.co.uk

A
HALMA
GROUP
COMPANY

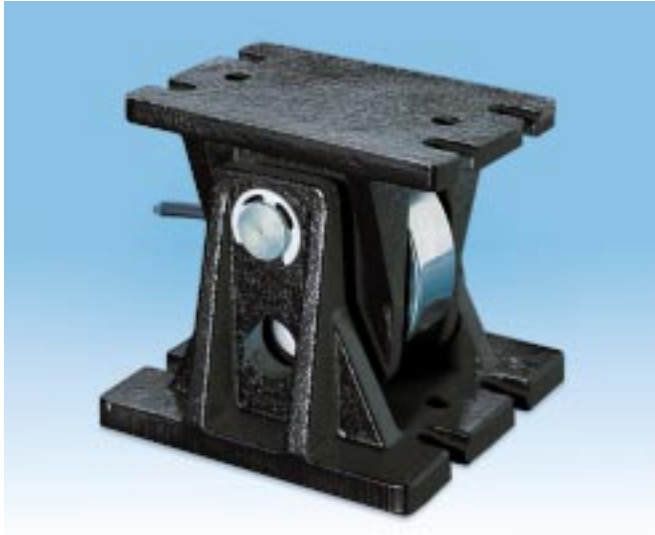


Approval No. 925394

Series T95 LA

Folded shear beam load cell for high accuracy weighing

capacities 2 te to 20 te



stainless steel load sensor

auto-phoretic toughened surface (assembly only)

fully welded construction sealed to IP 68

5 year warranty

ease of installation

integral lift off prevention

load cell is always in tension

ideal in vibrating applications

OIML C3 approval available

unique damping feature

The T95 LA range comprises of both stainless steel and alloy steel load cells complete with toughened auto-phoretic finish loading assembly. Although the assembly is used in **compression**, the cell is mounted in a pendulum and operates in **tension**. This ensures that the load point is always maintained through the central axis of the cell, even when the assembly is subjected to considerable movement or misalignment.

The T95 LA is most suitable for high accuracy applications and where movement or vibration are present. eg. mixers, catalyst vessels, weighing platforms, axle weighers and weighbridges. It is also available with intrinsically safe certification EEx ia IIC T6 to CENELEC Standard EN50020 : 1995.



Thames Side - Maywood

...your specialist load cell partner